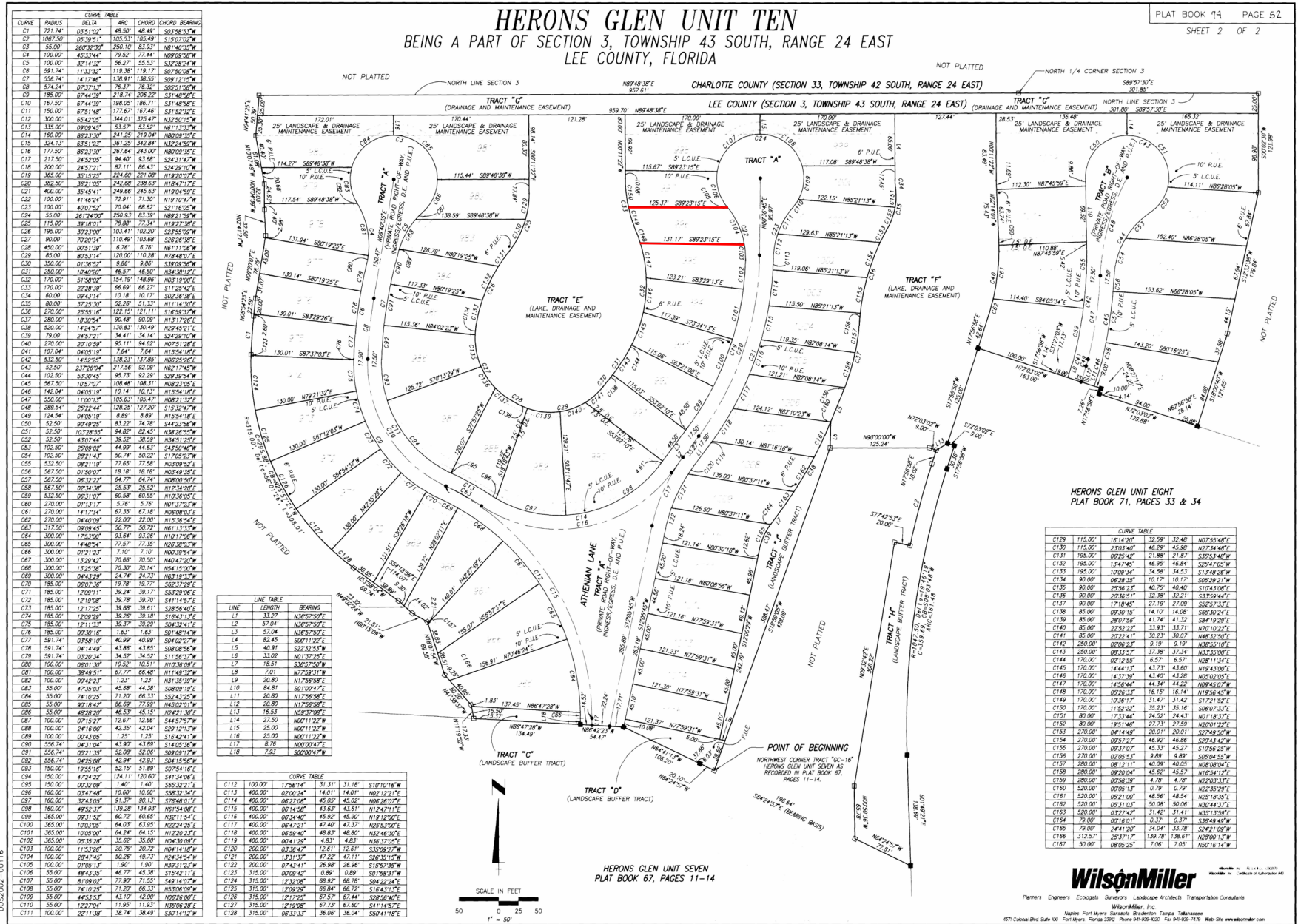


# HERONS GLEN UNIT TEN

BEING A PART OF SECTION 3, TOWNSHIP 43 SOUTH, RANGE 24 EAST  
LEE COUNTY, FLORIDA



LINE	LENGTH	BEARING
L1	33.57	N63°25'00"E
L2	57.04	N63°25'00"E
L3	57.04	N63°25'00"E
L4	82.45	S00°11'22"E
L5	40.91	S00°32'18"E
L6	33.02	N01°37'25"E
L7	18.51	S58°27'30"W
L8	7.01	N77°59'11"W
L9	20.80	N17°56'56"E
L10	84.81	S07°00'41"E
L11	20.80	N17°56'56"E
L12	20.80	N17°56'56"E
L13	16.53	N52°37'08"E
L14	27.56	N00°11'22"E
L15	25.00	N00°11'22"E
L16	25.00	N00°11'22"E
L17	81.76	N00°00'00"E
L18	79.81	S00°00'00"W

CURVE	RADIUS	CHORD	CHORD BEARING
C1	721.74	675.102	48.50
C2	1067.50	687.597	105.33
C3	55.00	260.230	250.10
C4	100.00	452.144	78.52
C5	100.00	374.322	56.27
C6	591.74	113.323	119.38
C7	556.74	141.748	138.51
C8	574.24	67.371	76.37
C9	185.00	674.330	218.24
C10	187.50	674.330	218.24
C11	150.00	673.146	177.67
C12	300.00	674.330	218.24
C13	330.00	674.330	218.24
C14	241.25	219.04	146.29
C15	304.13	673.122	181.25
C16	177.50	682.930	207.64
C17	217.50	245.005	94.40
C18	200.00	245.271	97.11
C19	160.00	301.225	124.60
C20	382.50	362.105	242.68
C21	400.00	324.014	249.68
C22	100.00	414.254	72.91
C23	100.00	407.522	70.04
C24	55.00	261.240	230.83
C25	115.00	381.851	78.88
C26	195.00	302.300	103.41
C27	80.00	702.347	110.49
C28	450.00	605.139	6.38
C29	85.00	805.314	120.00
C30	350.00	613.629	8.86
C31	220.00	1042.002	45.37
C32	170.00	515.005	154.19
C33	170.00	224.397	66.69
C34	60.00	668.000	10.18
C35	80.00	374.322	52.28
C36	270.00	250.167	122.15
C37	270.00	180.254	130.83
C38	230.00	142.847	130.83
C39	270.00	245.721	34.41
C40	270.00	201.039	85.11
C41	107.04	1004.919	7.64
C42	532.50	1452.25	138.23
C43	52.50	232.284	217.56
C44	102.50	312.847	257.32
C45	567.50	1057.00	108.48
C46	142.04	940.139	10.14
C47	550.00	1120.000	105.63
C48	288.54	252.444	128.25
C49	124.54	640.119	8.89
C50	52.50	804.202	83.27
C51	52.50	430.744	39.52
C52	102.50	2009.000	44.98
C53	102.50	2009.000	44.98
C54	102.50	2009.000	44.98
C55	532.50	682.119	77.85
C56	567.50	682.119	77.85
C57	567.50	682.119	77.85
C58	567.50	682.119	77.85
C59	532.50	682.119	77.85
C60	270.00	611.317	5.78
C61	270.00	141.734	67.35
C62	270.00	604.000	22.00
C63	317.50	609.045	50.72
C64	300.00	175.100	93.64
C65	300.00	144.844	77.85
C66	300.00	612.122	7.10
C67	300.00	132.842	70.68
C68	300.00	132.842	70.68
C69	300.00	132.842	70.68
C70	185.00	121.008	39.24
C71	185.00	121.008	39.24
C72	185.00	121.008	39.24
C73	185.00	121.008	39.24
C74	185.00	121.008	39.24
C75	185.00	121.008	39.24
C76	185.00	121.008	39.24
C77	185.00	121.008	39.24
C78	185.00	121.008	39.24
C79	185.00	121.008	39.24
C80	100.00	680.130	10.52
C81	100.00	384.915	67.79
C82	100.00	604.215	1.23
C83	55.00	473.519	45.68
C84	55.00	741.225	71.09
C85	55.00	907.842	66.69
C86	55.00	482.820	46.53
C87	100.00	671.227	12.66
C88	100.00	241.602	42.35
C89	100.00	604.102	1.25
C90	556.74	641.904	43.80
C91	556.74	641.904	43.80
C92	556.74	641.904	43.80
C93	150.00	1294.122	52.51
C94	150.00	472.242	124.11
C95	150.00	602.109	1.40
C96	160.00	604.467	10.80
C97	160.00	384.109	91.37
C98	160.00	482.137	139.28
C99	365.00	602.109	60.34
C100	365.00	1000.109	64.03
C101	365.00	1000.109	64.03
C102	365.00	1000.109	64.03
C103	100.00	115.298	20.75
C104	100.00	284.745	50.28
C105	100.00	610.917	1.80
C106	55.00	484.130	45.38
C107	55.00	819.062	77.90
C108	55.00	741.225	71.20
C109	55.00	449.115	43.10
C110	55.00	122.704	11.85
C111	100.00	321.138	38.74

CURVE	RADIUS	CHORD	CHORD BEARING
C129	115.00	1614.207	32.59
C130	115.00	2302.407	46.29
C131	185.00	689.253	21.87
C132	195.00	1324.455	46.95
C133	185.00	1078.341	34.58
C134	90.00	968.385	10.17
C135	85.00	205.931	40.75
C136	90.00	207.851	32.38
C137	90.00	17.844	27.19
C138	85.00	689.253	21.87
C139	85.00	207.851	41.74
C140	85.00	222.222	33.83
C141	85.00	202.244	30.23
C142	250.00	620.823	9.19
C143	250.00	682.119	37.38
C144	170.00	627.295	6.57
C145	170.00	1444.111	43.73
C146	170.00	1437.391	43.40
C147	170.00	1438.644	44.34
C148	170.00	658.215	16.15
C149	170.00	102.961	31.49
C150	170.00	113.222	35.21
C151	80.00	173.844	24.52
C152	80.00	181.146	27.73
C153	230.00	641.904	20.01
C154	270.00	693.712	46.82
C155	270.00	697.370	45.37
C156	270.00	620.823	2.80
C157	280.00	682.119	40.09
C158	280.00	697.004	45.62
C159	280.00	602.848	4.78
C160	520.00	602.848	0.79
C161	520.00	652.190	48.56
C162	520.00	602.848	0.79
C163	520.00	602.848	0.79
C164	78.00	602.848	0.37
C165	78.00	242.124	34.94
C166	312.50	652.117	139.78
C167	50.00	680.255	7.06

**Wilson Miller**

Surveyors Engineers Ecologists Scientists Landscape Architects Transportation Consultants

Wilson Miller Inc. 11000 N. US Highway 1, Suite 100, Tallahassee, Florida 32310  
 904.933.1111 Fax 904.933.1112 www.wilsonmiller.com